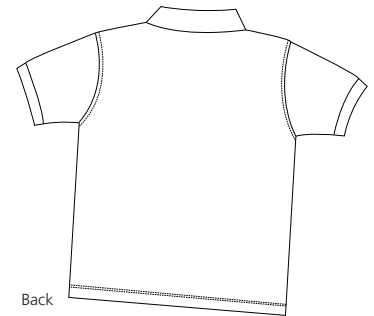
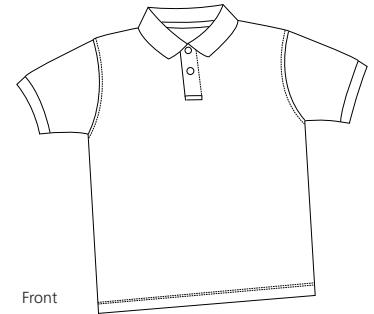


Youth Silk Touch Sport Shirt



Y500

- * 5-ounce * 65/35 poly/cotton pique * Flat knit collar and cuffs
- * Double-needle armholes and bottom hem * Side vents
- * Metal buttons with dyed-to-match rims * 2 or 3-button placket, depending on size

Care Instructions:
 Machine wash cold with like colors.
 Do not bleach.
 Tumble dry low.
 Warm iron if necessary.

Finished Measurements in Inches					
Size	XS(2-4)	S(6-8)	M(10-12)	L(14-16)	XL(18-20)
Chest	14.25	15.5	17	18	19
Body	17.5	19.5	22	24.5	27
Sleeve	6	6.75	7.25	8	8.75
Collar	13	13.5	14	14.5	15.5

Chest width measured 1" below arm hole. Sleeve length measured from shoulder seam to hem.
 Front body length measured from high point shoulder to bottom hem. Collar measured by circumference.

Colors	
	Black
	Burgundy
	Cool Grey
	Dark Green
	Light Blue
	Navy
	Red
	Royal
	White

Please Note:
 Colors shown are approximate and for reference only. For closest match see PMS colors, or for exact match, returnable samples and grommeted samples are available.

Color Chart									
Colors	Black	Burgundy	Cool Grey	Dark Green	Light Blue	Navy	Red	Royal	White
Textile PMS	19-4006TC	19-1617TC	17-1501TC	19-5320TC	15-3920TC	19-3920TC	19-1764TC	19-4044TC	11-0601TC
General PMS	Process Black	505C	Cool Grey 8C	5535C	278C	533C	187C	294C	No Match