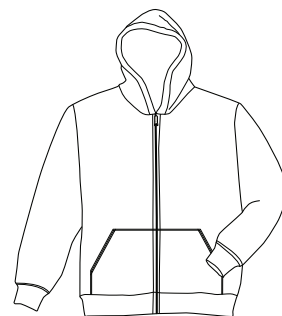
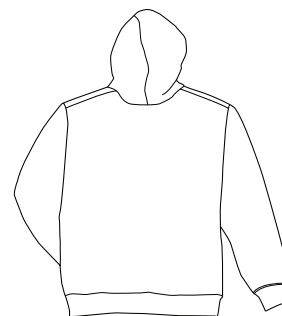


# Full Zip Hooded Sweatshirt



Front



Back

## PC90ZH

- \* 9-ounce, 50/50 cotton/poly fleece
- \* Two-ply hood
- \* Set-in sleeves
- \* Kangaroo pouch pocket
- \* Dyed-to-match drawcord (Ash and Athletic Heather have white drawcords)

**Care Instructions:**  
Machine wash cold.  
Do not dry clean, do not iron.  
Do not bleach, do not tumble dry.

Finished Measurements in Inches							
Size	S	M	L	XL	2XL	3XL	4XL
Length	28	29	30	31	32	33	34
Chest	20.5	22.5	24.5	26.5	28.5	30.5	32.5
Sleeve	35	36	37	38	38.5	40	40.5
Areas for Decoration	Left Chest / Right Chest / Full Back			Port Pocket™		NA	

Collar measured center back seam to top hem, Chest width 1" below arm hole, Side pocket from top to bottom of opening, Body length from back neck seam to hem, Sleeve length from center back seam to hem

Colors	
	White
	Black
	Ash
	Navy
	Athletic Heather
	Red
	Royal

**Please Note:**  
Colors shown are approximate and for reference only. For closest match see PMS colors, or for exact match, returnable samples and grommeted samples are available.

Color Chart							
Jacket Colors	White	Black	Ash	Navy	Athletic Heather	Red	Royal
Textile PMS	No Match	No Match	No Match	No Match	No Match	No Match	No Match
General PMS	663 C	Process Black C	Cold Grey 1 C	532 C	Cold Grey 5 C	711 C	660 C