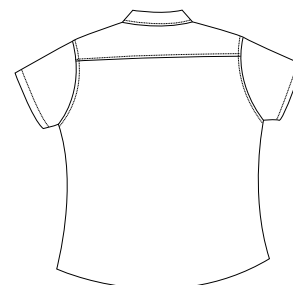


# Short Sleeve Ladies Value Denim Shirt

PORT & COMPANY®



Front



Back

## LSP11

- \* 6.5-ounce \* 100% cotton denim \* Garment washed \* Open collar
- \* Double-needle stitching \* Horn tone buttons \* Adjustable cuffs
- \* Button-through sleeve plackets

### Care Instructions:

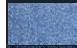

Machine wash cold with like colors.  
Do not bleach.  
Tumble dry low.  
Warm iron if necessary.

### Finished Measurements in Inches

Size	XS	S	M	L	XL	XXL	Plus 1X	Plus 2X
Chest	18.5	20.5	21.5	23.5	25.5	27.5	28.5	31
Body	26	26.5	27	27.5	28	28.5	31.5	32
Sleeve	6.25	6.5	6.75	7	7.5	7.75	8	8.5
Sweep	19	21	22.5	24	26	26.25	28.5	31

Chest width measured 1" below arm hole. Body length measured from back neck seam to hem.  
Sleeve length measured from shoulder seam to cuff. Bottom sweep measured side to side.

### Colors

	Faded Blue
	Ink Blue

### Please Note:

Colors shown are approximate and for reference only. For closest match see PMS colors, or for exact match, returnable samples and grommited samples are available.

*\*Due to a special wash process, colors may vary*

### Color Chart

Color	Faded Blue	Ink Blue
Textile PMS	No Match	No Match
General PMS	No Match	No Match