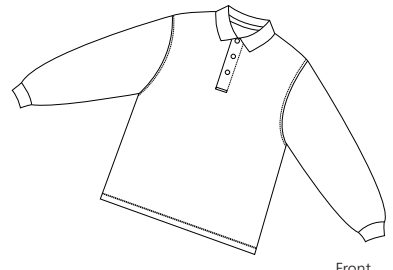
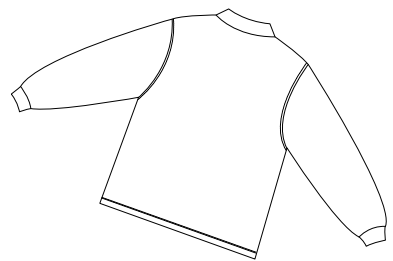


# Silk Touch Long Sleeve Sport Shirt



Front



Back

## K500LS

- \* 5-ounce \* 65/35 poly/cotton pique \* Flat knit collar and cuffs
- \* Double-needle armholes and bottom hem \* Side vents
- \* Metal buttons with dyed-to-match rims

**Care Instructions:**  
 Machine wash cold with like colors.  
 Do not bleach.  
 Tumble dry low.  
 Warm iron if necessary.

### Finished Measurements in Inches

Size	XS	S	M	L	XL	2XL	3XL	4XL	5XL	6XL
Chest	19.5	21	22	24	26	27.5	29	30.5	31.5	33
Body	25.5	26.5	30	31	32	33	33.5	34	34.5	35
Sleeve	32	34	35	36	37	38	39	40	41	42
Collar	15.5	16	16.5	17	17.5	18	18.5	19	19.5	20

Chest width measured 1" below arm hole. Body length measured from center back neck seam to hem.  
 Sleeve length measured from center back neck seam to hem. Collar measured by circumference.

### Colors

- Black
- Burgundy
- Cool Gray
- Dark Green
- Navy
- Red
- Royal
- Stone
- White

**Please Note:**  
 Colors shown are approximate and for reference only. For closest match see PMS colors, or for exact match, returnable samples and grommated samples are available.

### Color Chart

Colors	Black	Burgundy	Cool Gray	Dark Green	Navy	Red	Royal	Stone	White
Textile PMS	19-4006TC	19-1617TC	17-1501TC	19-5320TC	19-3920TC	19-1764TC	19-4044TC	15-1214TC	11-0601TC
General PMS	Process Black	505C	Cool Grey 8C	5535C	533C	187C	294C	466C	No Match