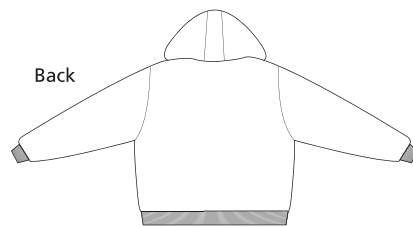
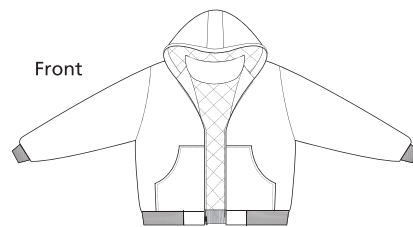


# Hooded Work Jacket



## J763H

- \* 12-ounce \* 100% heavyweight cotton duck cloth \* 6-ounce polyfill nylon lining
- \* Hood with dyed-to-match drawstring \* Rib knit cuffs and hem; muff pockets
- \* Port Pocket™ for easy embroidery on left chest and back

**Care Instructions:**  
 Machine wash cold. Do not bleach.  
 Tumble dry low. Remove promptly.  
 Cool iron if necessary.  
 Do not dry clean if printed.

### Finished Measurements in Inches

Size	XS	S	M	L	XL	2XL	3XL	4XL	5XL	6XL
Chest	45	48	51	54	57	60	63	66	77.5	80.5
Length	26.5	27	27.5	28	29.5	30	31	31.5	33	34
Sleeve	33.5	35.5	37	38	38.5	39	39.5	40	42	42.5
Areas for Decoration	Left Chest, Full Back			Port Pocket™			Left Underarm			

Collar measured center back seam to top hem. Chest width measured 1" below arm hole.  
 Body length measured from back neck seam to hem. Sleeve length measured from center back seam to hem.

### Color Chart

Color	Duck Brown
Textile PMSf	18-0933TC
General PMS	464C

### Colors



**Please Note:**  
 Colors shown are approximate and for reference only. For closest match see PMS colors, or for exact match, returnable samples and grommets are available.