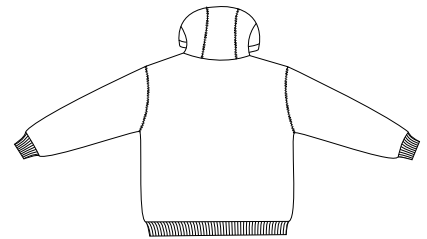
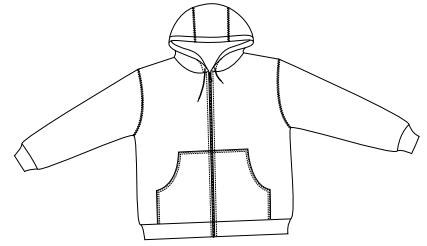


Heavyweight Full Zip Hooded Sweatshirt with Thermal Lining



CS620

- * 12-ounce * 60/40 cotton/poly * 9-ounce * 100% poly thermal lining
- * Rib knit cuffs and waistband * Brass zipper * Drawcord with brass eyelets
- * Front muff pockets * Port Pocket™ access

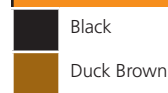
Care Instructions:
 Machine wash cold. Do not bleach.
 Tumble dry low. Remove promptly.
 Cool iron if necessary.
 Do not dry clean if printed.

Finished Measurements in Inches

Size	XS	S	M	L	XL	2XL	3XL	4XL	5XL	6XL
Chest	19	21	23	25	27	29	31	33	35	37
Length	26.5	27.5	28.5	29.5	30.5	31.5	32.5	33.5	34.5	35.5
Sleeve	33.5	34.5	35.5	36.5	37.5	38.5	39.5	40.5	41.5	42.5
Areas for Decoration	Left Chest, Full Back		Port Pocket™			Left Inside Zipper, Bottom Back Hem				

Chest width measured 1" below arm hole. Sleeve length measured from center back seam to hem.
 Body length measured from high point shoulder to hem.

Colors



Please Note:
 Colors shown are approximate and for reference only. For closest match see PMS colors, or for exact match, returnable samples and grommited samples are available.

Color Chart

Color	Black	Duck Brown
Textile PMSf	19-4005TC	18-0933TC
General PMS	Process Black	464C