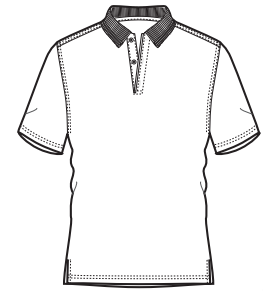
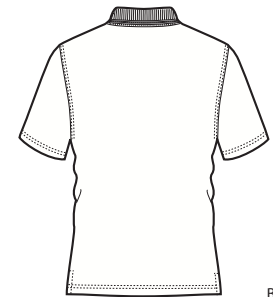


# Pocketless Pique Polo



Front



Back

## CS402

- \* 6.8-ounce, 100% spun polyester
- \* Traditional, relaxed look
- \* Flat knit collar
- \* 3-button placket
- \* Dyed-to-match buttons
- \* Open hem sleeves

Care Instructions:  
Wash Cold  
Tumble Dry Low

Finished Measurements in Inches										
Size	XS	S	M	L	XL	2XL	3XL	4XL	5XL	6XL
Chest	20"	21"	22"	23 1/2"	25"	26 1/2"	28 1/2"	30 1/2"	32 1/2"	34 1/2"
Length	28 1/2"	29 1/2"	30 1/2"	31 1/2"	32 1/2"	33 1/2"	34"	34 1/2"	35"	35 1/2"
Sleeve	17 3/4"	18 3/4"	19 3/4"	22"	23 1/4"	24 1/4"	25 1/4"	26 1/4"	27 1/4"	28 1/4"
Neck	6 1/4"	6 1/2"	6 3/4"	7"	7 1/4"	7 1/2"	7 3/4"	8	8 1/4"	8 1/2"

Colors	
	Black
	Navy
	Royal
	White
	Red
	Burgundy
	Stone
	Dark Green

Please Note:  
Colors shown are approximate and for reference only. For closest match see PMS colors, or for exact match, returnable samples and grommeted samples are available.

Color Chart								
Base Color	Black	Navy	Royal	White	Red	Burgundy	Stone	Dark Green
Textile PMS	No Match	No Match	No Match	No Match	No Match	No Match	No Match	No Match
General PMS	ProBlk C	432 C	534 C	WmGy 1 C	703 C	7428 C	4675 C	426 C