



Ladies Crescent Valley™ 1/2-Zip Pullover XL6817



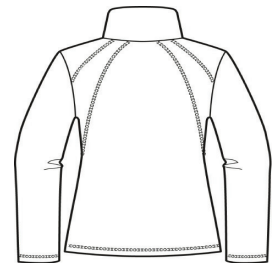
A super lightweight layer for crisp morning hikes or the daily commute. An anti-pill finish and stitching details add modern style. Features open cuffs and an open hem. Contrast Columbia logo embroidered on upper right sleeve. Made of 100% polyester featherweight microfleece.**

CARE INSTRUCTIONS

Machine Wash Cold Gentle, With Like Colors, Non-Chlorine Bleach When Needed, Tumble Dry Gentle Low, Remove Promptly, Do Not Iron, Dry-cleanable.

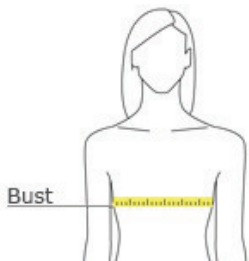


front



back

HOW TO MEASURE



BUST
With arms down at sides, measure around the upper body, under arms and around the fullest part of the bust.

SIZE CHART

	S	M	L	XL
Size	4/6	8/10	12/14	16/18
Bust	34-36	36-38	38-41	41-44

COLOR INFORMATION



Black



Columbia Navy



Rouge



White