



Nike Golf Elite Tote TG0273



A padded laptop sleeve and ample storage makes this tote all business, but the contrast welded Swoosh design trademark gives it athletic appeal.

- 450D polyester
- 150D polyester lining
- Zippered top opening
- Interior pockets
- Web handles
- Side pocket
- Laptop sleeve dimensions: 11.5"h x 16.5"w x 10"d; fits most 15" laptops
- Dimensions: 22"h x 13.5"w x 8"d; Approx. 1,586 cubic inches



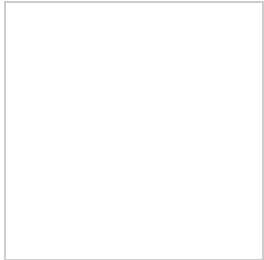
front

Bags not intended for use by children 12 and under. *

CARE INSTRUCTIONS

Wipe clean with a damp cloth.

HOW TO MEASURE



BAGS

Measurements and decoration areas vary by bag.

SIZE CHART

	OSFA
Bags	N/A

COLOR INFORMATION



Black/ Spart
Fuchsia
PMS PROCESS
BLACK C



White/ Spart
Fuchsia
PMS WHITE