

Port Authority® Ladies Patch Pockets Denim Shirt L652

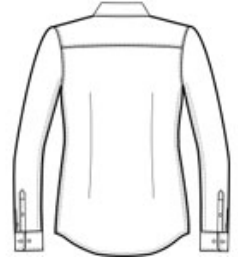


We've taken an all-time favorite and given it modern details like double chest pockets and double-needle stitching for extra durability. This durable, versatile shirt can easily be dressed up or down for a variety of looks.

- 6.2-ounce, 100% cotton
- Gently contoured silhouette
- Bust and back darts
- Front princess seams
- Double-needle stitching on placket, collar, front and back yokes and cuffs
- Open collar
- Faux horn buttons
- Patch pockets
- Adjustable cuffs with button-through sleeve plackets
- Slight shirttail hem



front

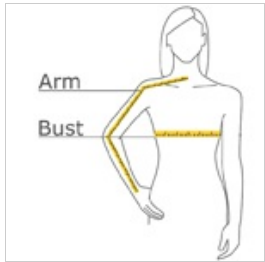


back

CARE INSTRUCTIONS

Machine Wash Cold. Use only non-chlorine bleach.
Tumble dry low.

HOW TO MEASURE



BUST

With arms down at sides, measure around the upper body, under arms and around the fullest part of the bust.

ARM

Place hand on hip. Start at the center of the back of the neck and measure across the shoulder, to the elbow, and then down to the wrist.

SIZE CHART

	XS	S	M	L	XL	XXL	3XL	4XL
Size	2	4/6	8/10	12/14	16/18	20/22	24/26	28/30
Bust	32-34	35-36	37-38	39-41	42-44	45-47	48-51	52-55
Arm	30 - 30 3/4	30 3/4 - 31 1/2	31 1/2 - 32	32 - 32 1/2	32 1/2 - 33	33 - 33 3/8	33 3/8 - 33 3/4	33 3/4 - 34 1/2

COLOR INFORMATION



Light Indigo
PMS NO MATCH