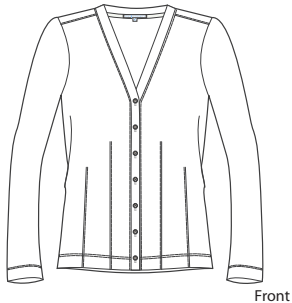
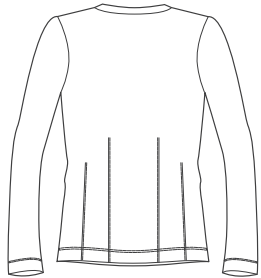


# Port Authority® - Ladies Cardigan



Front



Back

## L515

- \* 6.6-ounce, 96/4 cotton/spandex stretch fabric
- \* 1x1 rib knit construction
- \* Gently contoured silhouette
- \* 7-button cardigan placket with dyed-to-match buttons

Care Instructions:  
 Machine wash cold  
 Wash with like colors  
 Do not bleach  
 Tumble dry low  
 Warm iron if necessary

### Finished Measurements in Inches

Size	XS	S	M	L	XL	XXL	Plus 1X	Plus 2X
Chest	16 1/2	18	19 1/2	21	22 1/2	24	26	28
Shirt	25 1/2	26	26 1/2	27	27 1/2	28	28 1/2	29
Sleeve	31 1/2	32 1/4	33	33 3/4	34 1/2	35 1/4	35 3/4	36 1/4
Collar	7 1/4	7 1/2	7 3/4	8	8 1/4	8 1/2	8 3/4	9

Collar measured from HPS to HPS

### Colors

-  Black
-  White
-  Sapphire Blue
-  Scarlet Red
-  Dark Chocolate Brown
-  Moonlight Blue

Please Note:  
 Colors shown are approximate and for reference only. For closest match see PMS colors, or for exact match, returnable samples and grommeted samples are available.

### Color Chart

Colors	Black	White	Sapphire Blue	Scarlet Red	Dark Chocolate Brown	Moonlight Blue
Textile PMS	No Match	No Match	No Match	No Match	No Match	No Match
General PMS	ProBlk C	663 C	5265 C	186 C	4975 C	653 C