



Style: 5100

Bayside Adult Short-Sleeve Tee



Description:

A classic style with the great quality that comes from being made in the USA. Coordinate: Youth 5100

Sizes: S-5XL

Key Features:

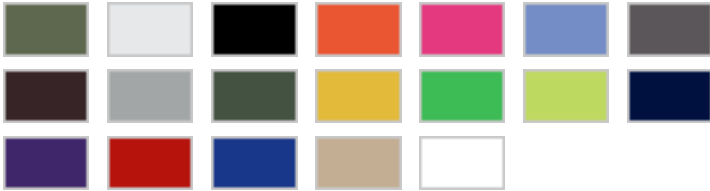
- preshrunk 100% heavyweight cotton (blended heavyweight cotton/polyester in heather colors)
- 6.1 oz.
- full cut
- shoulder-to-shoulder taping
- double-needle sleeve and bottom hems
- select colors up to 4XL

S-4XL: Army, Bright Pink, Charcoal, Chocolate, Gold, Kelly, Sand

S-5XL: Ash (99/1), Black, Bright Orange, Carolina Blue, Dark Ash (90/10), Forest Green, Lime Green, Navy, Purple, Red, Royal, White

Care Instructions:

Machine wash cold with like colors. Do not bleach. Tumble dry low. Do not iron if decorated.



Product Specifications

Size	Length	Width
S	26	36
M	28	40
L	30	44
XL	31	48
2XL	32	52
3XL	33	56
4XL	34	60
5XL	35	64